

Region One Native Plant Program: Partnering with Western Federal Highways

2015 Accomplishments

In 2015, Region One continued its partnership with Western Federal Lands Highway Division (WFLHD) to provide mutual benefit to both federal agencies through cooperative sharing of services for revegetation and development of native plant materials during road reconstruction projects. The partnership, initiated in 2008, has resulted in agreements between the agencies with funding provided to the Region's Native Plant Program to design, coordinate, and implement revegetation plans for WFLHD projects in both Region One and Region Four. Region One has received in excess of \$1.3 million dollars under reimbursable agreement through this partnership.

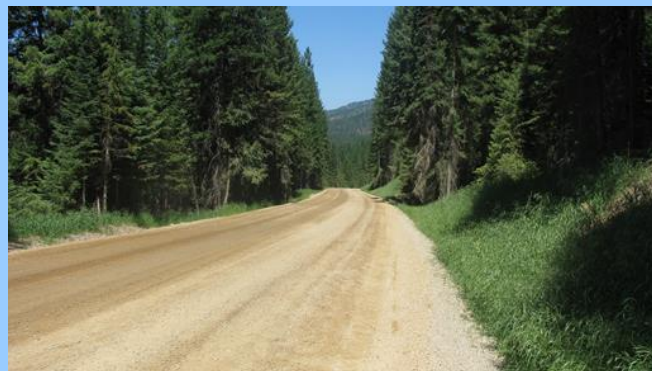


Figure 1: Region One's Native Plant program provided revegetation services to the Petty Creek project utilizing native plant materials to cover bare soils on cut and fill slopes while contributing to WFLHD's need to meet permit requirements.

Current projects:

- Rimini Road project, Helena National Forest. The project involves revegetating newly reconstructed streambank channels and bridges in addition to cut and fill slopes associated with road reconstruction. Native plant materials developed for the project include riparian shrubs, upland shrubs, and native forbs and grasses.
- Petty Creek project, Lolo National Forest. The project involves revegetation of both riparian areas and roadside corridors.
- Salmon River project, Nez Perce National Forest: The project involves establishing willows and riparian vegetation to improve habitat for endangered salmon following road reconstruction.
- Ketchum Challis project, Sawtooth National Forest and Sawtooth National Recreation Area. This project occurs in a wild and scenic corridor where restoration of native plant communities following road reconstruction is considered critical.

Year project initiated: 2008

Project completion: On-going

Beneficiaries:

Region 1 and 4 Forests
Region 1 Native Plant Program
USFS Coeur d'Alene Nursery
WFLHD road projects

Contact person & phone number:

Susan Rinehart, R1 Native Plant Program
Manager (406) 329-3669



Figure 2: Shrubs under development at the USFS Coeur d'Alene Nursery for Western Federal Highway projects.



Figure 3. A variety of native plant materials is used which provides numerous benefits to National Forest System lands including nectar and pollen for pollinators.



**USFS Region One
Building 26
Fort Missoula
Missoula, MT 59804**