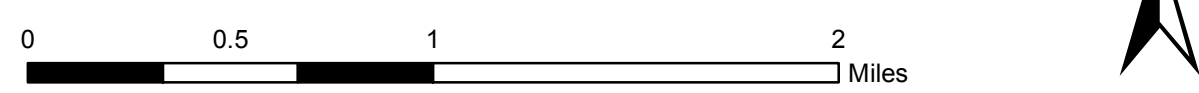


References
 Map prepared by USDA Forest Service,
 Pacific Southwest Region Geospatial Services
 at the request of Representative Judy Chu.

Disclaimer
 The USDA Forest Service makes no warranty, expressed or implied
 regarding the data displayed on this map, and reserves the right to
 correct, update, modify, or replace this information without notification.

- Proposed Condor Peak Wilderness Boundary
- National Forest Boundary
- San Gabriel Mountains National Monument Boundary
- National Forest System Lands
- Existing National Forest Wilderness
- Non-National Forest System Lands



Sheet 1 of 4

Condor Peak Wilderness - Proposed
 116_HR2215_Chu_CondorPeak_06-06-2019

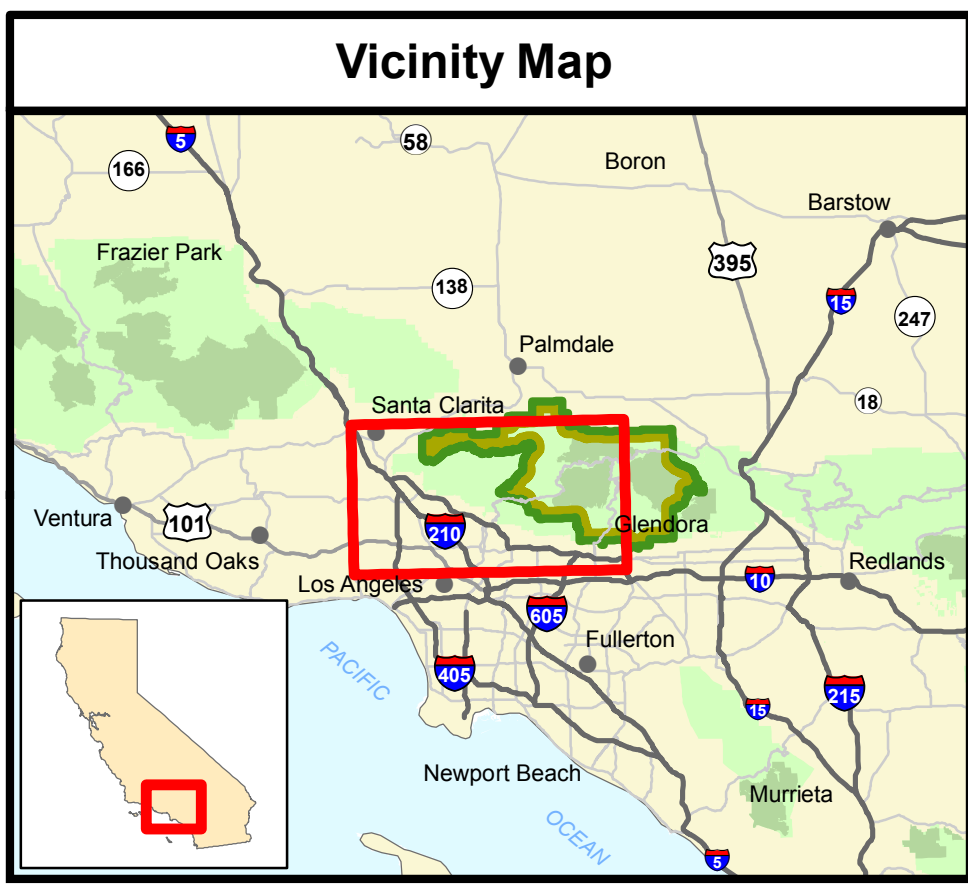
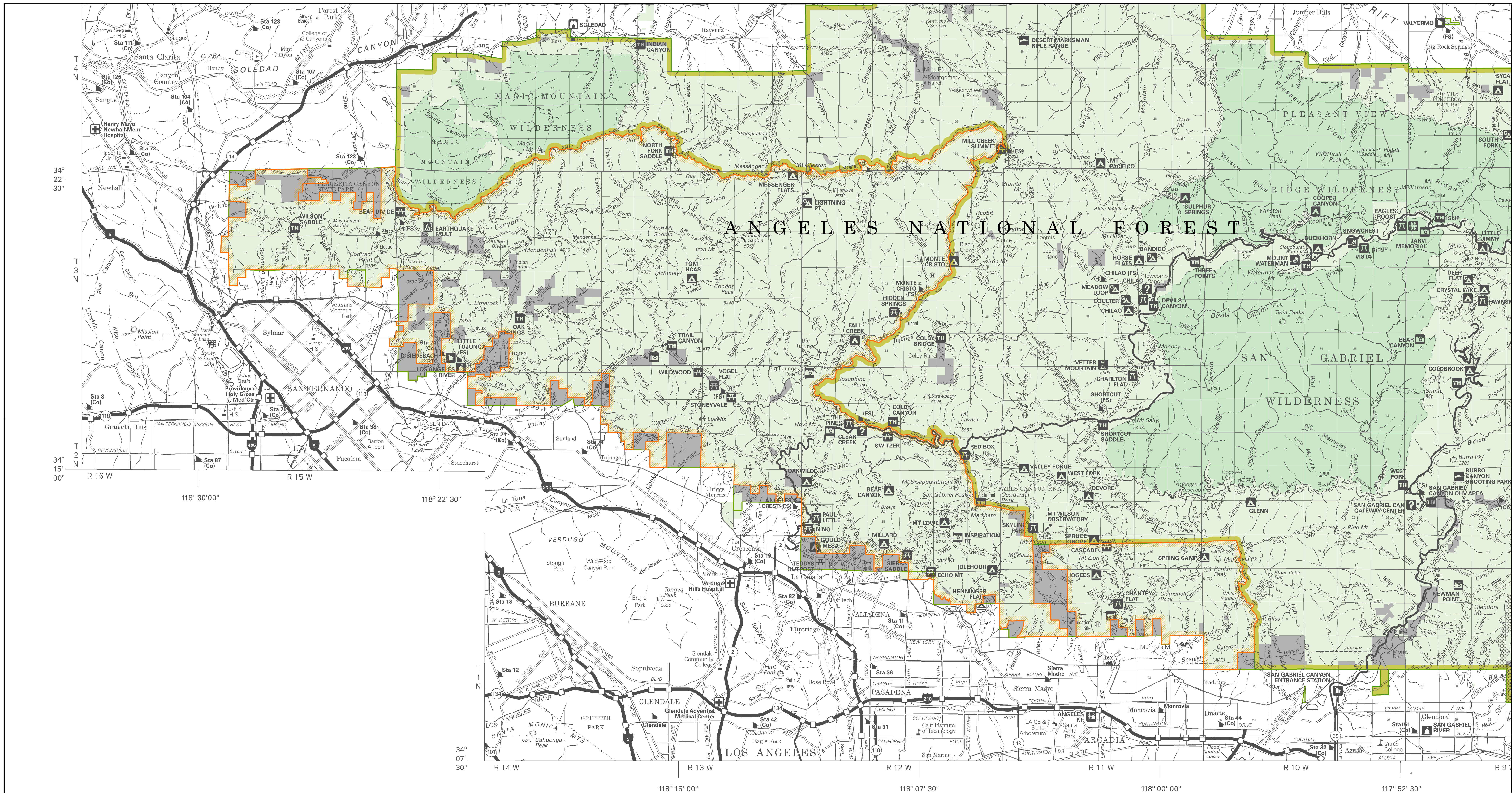
Legislative Map
 San Gabriel Mountains Foothills and Rivers Protection Act of 2019

Approximately 8,207 acres
 T2N R13W & T3N R13W,
 San Bernardino Meridian, County of Los Angeles, CA

U.S. Forest Service -Pacific Southwest Region
 Angeles National Forest
 U.S. Congressional District 27, 28

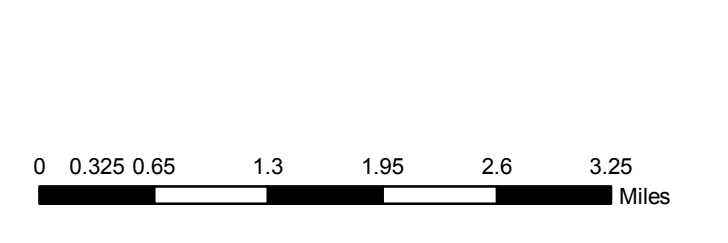
Copies of this map are available for public inspection
 in the Office of the Regional Forester, Pacific Southwest Region, Vallejo, CA

Map Creation Date - June 6, 2019

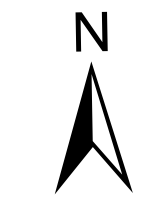


References
 Map prepared by USDA Forest Service, Pacific Southwest Region Geospatial Services at the request of Representative Judy Chu.

Disclaimer
 The USDA Forest Service makes no warranty, expressed or implied regarding the data displayed on this map, and reserves the right to correct, update, modify, or replace this information without notification.



- Proposed San Gabriel Mountains National Monument Expansion
- San Gabriel Mountains National Monument Boundary
- National Forest Boundary
- National Forest System Lands
- National Forest Wilderness
- Non-National Forest System Lands Within National Forest Boundary



Map Creation Date - June 26, 2019

Proposed San Gabriel Mountains National Monument Expansion 116_HR2215_Chu_SanGabrielMtnsNMAAdditions_06-26-2019	
Legislative Map	
San Gabriel Mountains Foothills and Rivers Protection Act of 2019	
Approximately 109,167 acres T1N - T4N & R10W - R15W, San Bernardino Meridian, County of Los Angeles, CA	
U.S. Forest Service -Pacific Southwest Region Angeles National Forest U.S. Congressional District 27	
Copies of this map are available for public inspection in the Office of the Regional Forester, Pacific Southwest Region, Vallejo, CA	

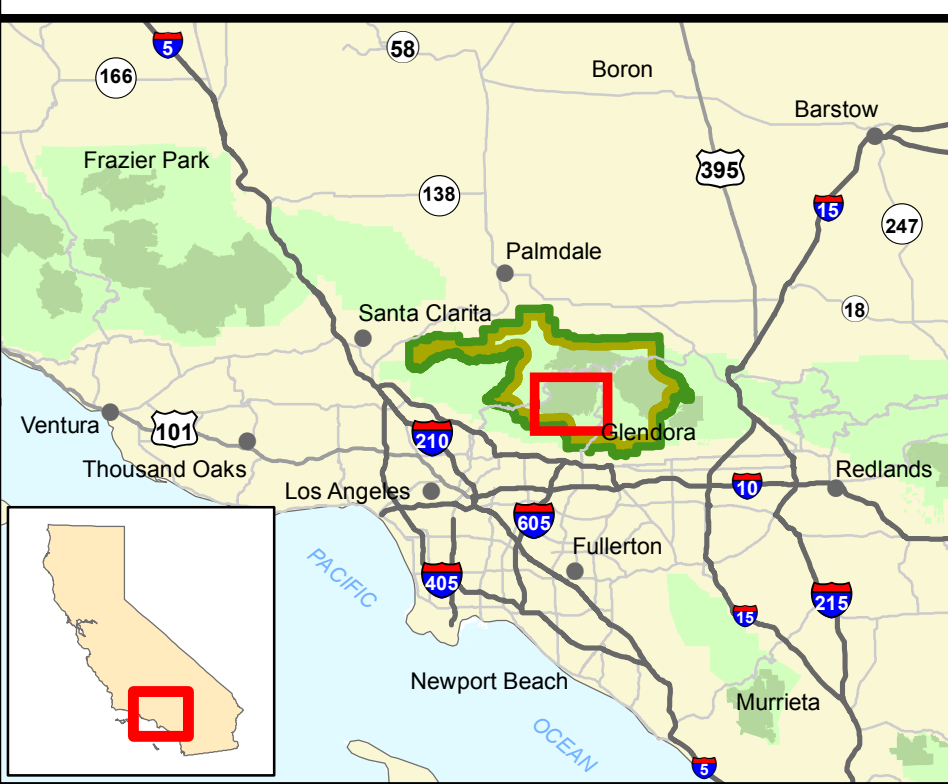


ANGELES NATIONAL FOREST

SAN GABRIEL WILDERNESS

SAN GABRIEL MOUNTAINS NATIONAL MONUMENT

Vicinity Map



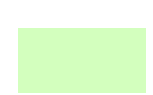




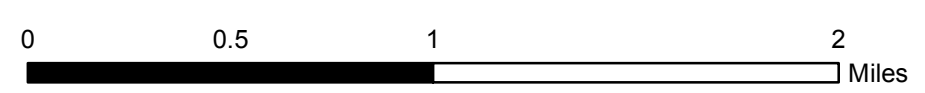
References

Map prepared by USDA Forest Service, Pacific Southwest Region Geospatial Services at the request of Representative Judy Chu.

Disclaimer

The USDA Forest Service makes no warranty, expressed or implied regarding the data displayed on this map, and reserves the right to correct, update, modify, or replace this information without notification.

-  Proposed San Gabriel Wilderness Additions Boundary
-  San Gabriel Mountains National Monument Boundary
-  National Forest System Lands
-  Existing National Forest Wilderness
-  Non-National Forest System Lands



Sheet 2 of 4

San Gabriel Wilderness Additions

116_HR2215_Chu_SanGabrielWildAdditions_06-06-2019

Legislative Map

San Gabriel Mountains Foothills and Rivers Protection Act of 2019

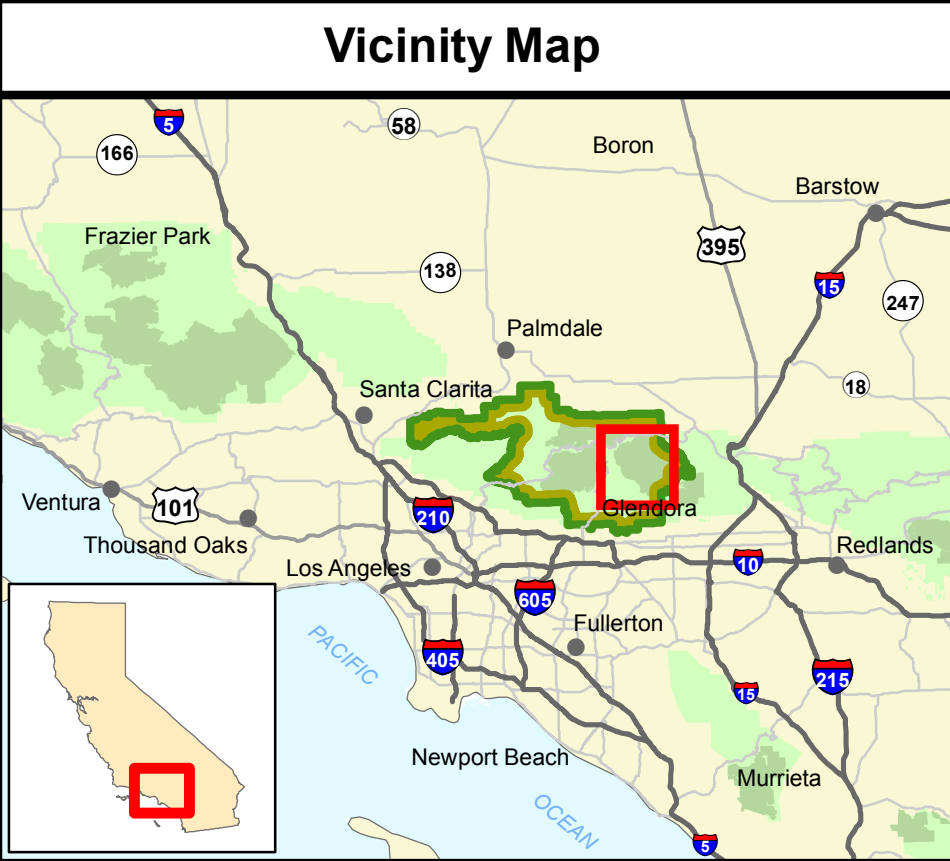
Approximately 2,032 acres

T2N, R9W - R13W
San Bernardino Meridian, County of Los Angeles, CA

U.S. Forest Service -Pacific Southwest Region
Angeles National Forest
U.S. Congressional District 27

Copies of this map are available for public inspection in the Office of the Regional Forester, Pacific Southwest Region, Vallejo, CA

Map Creation Date - June 06, 2019



References
 Map prepared by USDA Forest Service,
 Pacific Southwest Region Geospatial Services
 at the request of Representative Judy Chu.

Disclaimer
 The USDA Forest Service makes no warranty, expressed or implied
 regarding the data displayed on this map, and reserves the right to
 correct, update, modify, or replace this information without notification.



- Proposed Sheep Mountain Wilderness Additions Boundary
- National Forest Boundary
- San Gabriel Mountains National Monument Boundary
- National Forest System Lands
- Existing National Forest Wilderness
- Non-National Forest System Lands

Sheet 3 of 4

Sheep Mountain Wilderness Additions
 116_HR2215_Chu_SheepMtnWildAdditions_06-06-2019

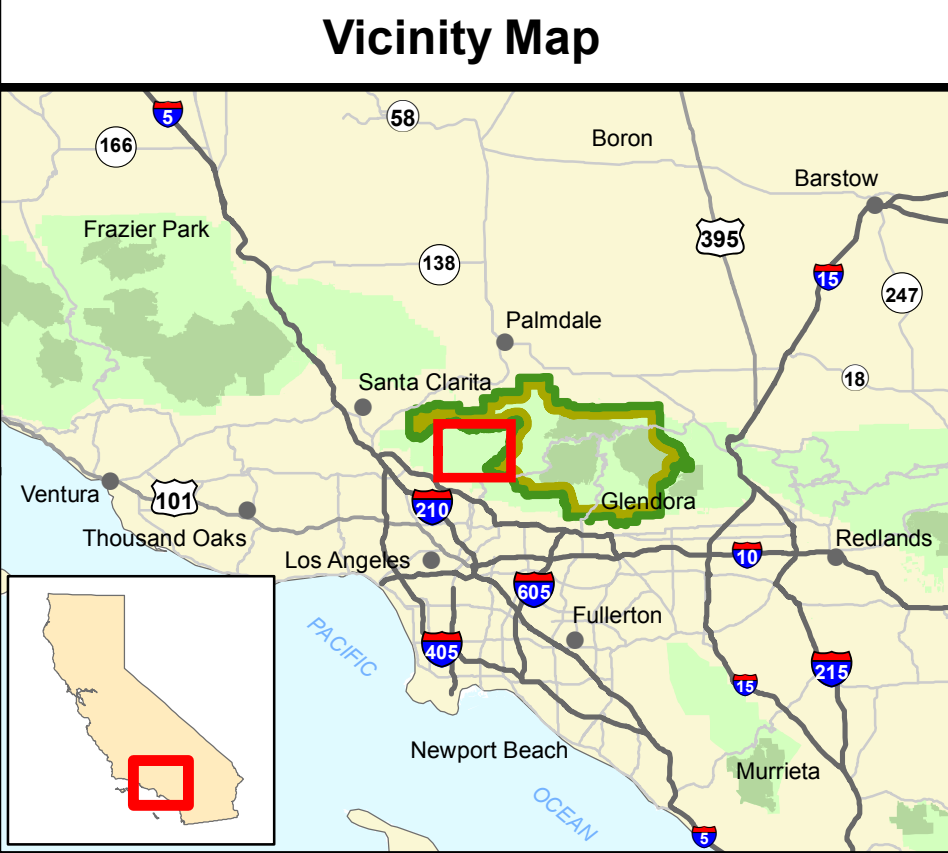
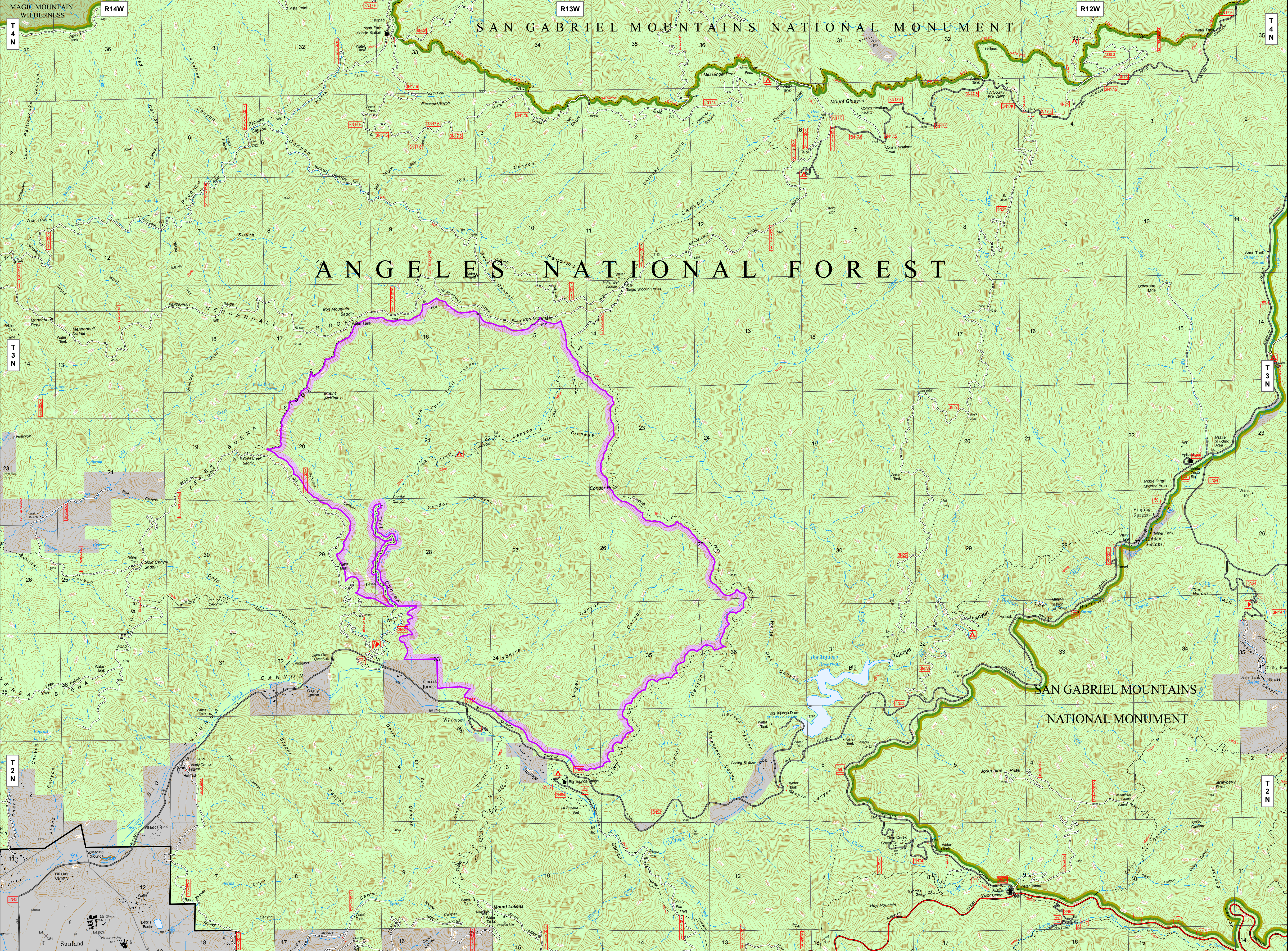
Legislative Map
 San Gabriel Mountains Foothills and Rivers Protection Act of 2019

Approximately 13,726 acres
 T2N - T3N & R8W - R9W,
 San Bernardino Meridian, County of Los Angeles, CA

U.S. Forest Service - Pacific Southwest Region
 Angeles National Forest
 U.S. Congressional District 27

Copies of this map are available for public inspection
 in the Office of the Regional Forester, Pacific Southwest Region, Vallejo, CA

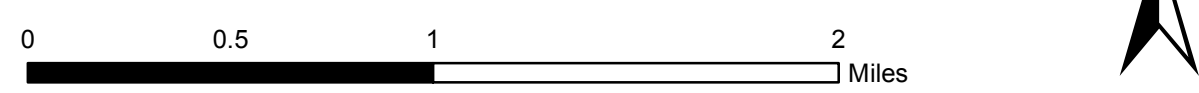
Map Creation Date - June 6, 2019



References
 Map prepared by USDA Forest Service,
 Pacific Southwest Region Geospatial Services
 at the request of Representative Judy Chu.

Disclaimer
 The USDA Forest Service makes no warranty, expressed or implied
 regarding the data displayed on this map, and reserves the right to
 correct, update, modify, or replace this information without notification.

- Proposed Yerba Buena Wilderness Boundary
- National Forest Boundary
- San Gabriel Mountains National Monument Boundary
- National Forest System Lands
- Existing National Forest Wilderness
- Non-National Forest System Lands



Sheet 4 of 4

Yerba Buena Wilderness - Proposed
 116_HR2215_Chu_YerbaBuenaWild_06-06-2019

Legislative Map
 San Gabriel Mountains Foothills and Rivers Protection Act of 2019

Approximately 6,694 acres
 T2N R13W & T3N R13W,
 San Bernardino Meridian, County of Los Angeles, CA

U.S. Forest Service -Pacific Southwest Region
 Angeles National Forest
 U.S. Congressional District 28

Copies of this map are available for public inspection
 in the Office of the Regional Forester, Pacific Southwest Region, Vallejo, CA

Map Creation Date - June 06, 2019

San Gabriel National Recreation Area Proposed Boundary

National Park Service
U.S. Department of the Interior

