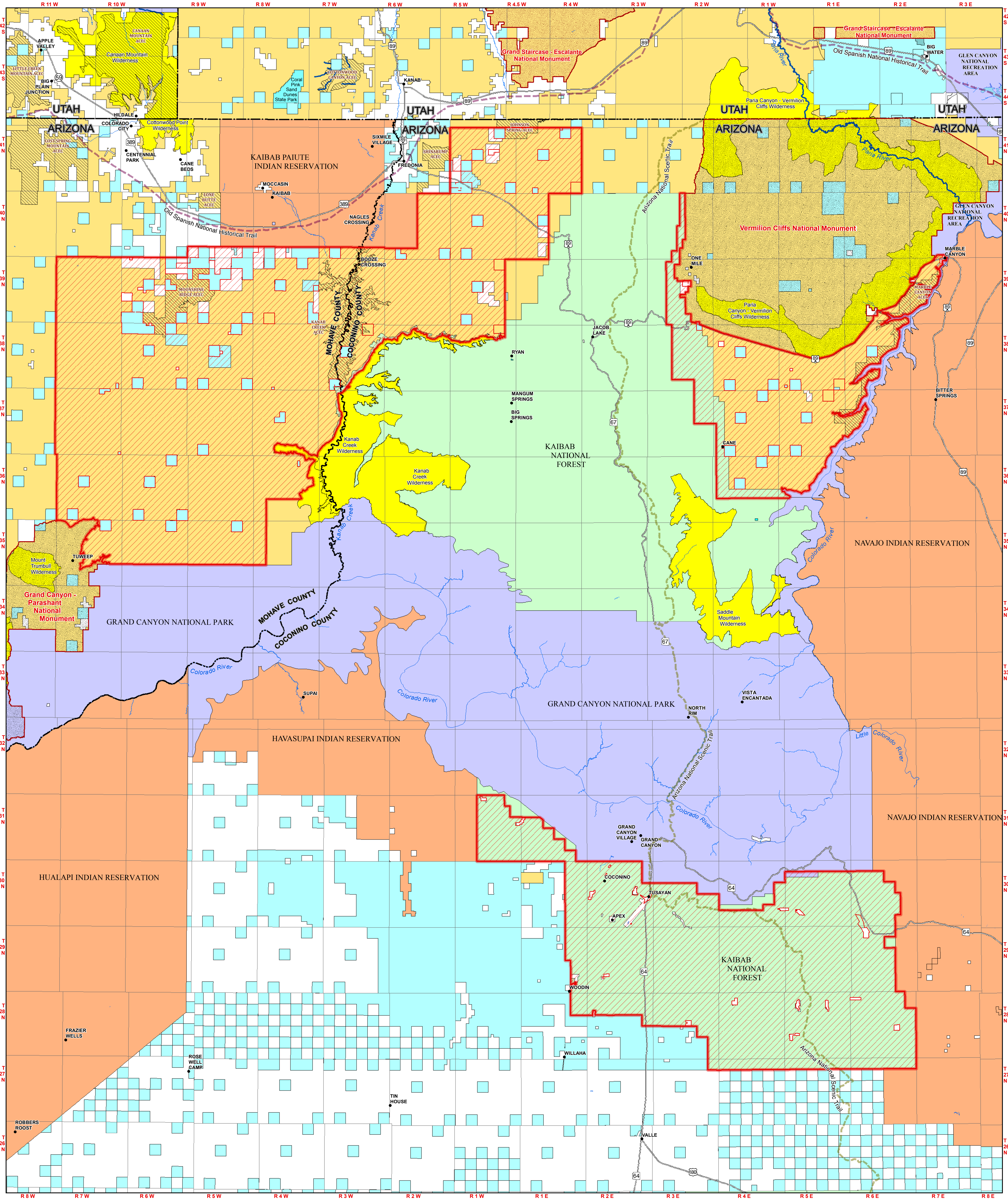


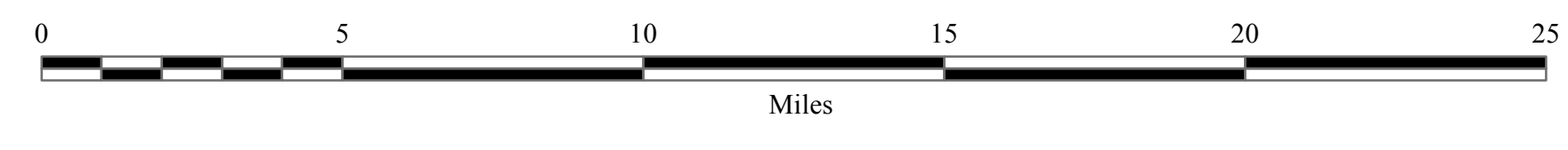
Grand Canyon Protection Act

January 22, 2021

This map prepared at the request of Representative Raúl Grijalva

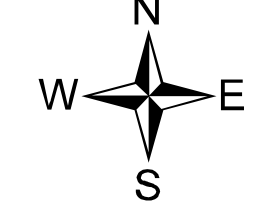


- | | | |
|--|-----------------|---------------------|
| Federal Mineral Estate to be Withdrawn | County Boundary | NPS |
| National Monument | ACEC | Private |
| Arizona National Scenic Trail | Wilderness Area | State |
| Old Spanish National Historic Trail | BLM | State Wildlife Area |
| Wild and Scenic River | Indian Lands | USFS |
| Perennial Stream | | |



Scale: 1:180,000

This map intended to be plotted at 34 x 44 inches



UNITED STATES DEPARTMENT OF THE INTERIOR
BUREAU OF LAND MANAGEMENT
ARIZONA STATE OFFICE



The Bureau of Land Management (BLM) makes no representations or warranties regarding the accuracy or completeness of this map. This map does not address encroachments or questions of location, boundary, and area, which an accurate survey may disclose. This map is intended and to be used as an illustration only. The map is merely representative of the data from which it was derived and is not binding on the BLM and may be revised at any time in the future. The BLM shall not be liable under any circumstances for any direct, indirect, special, incidental or consequential damages with respect to any claim by any user or any third party on account of or arising from the use of this map or the data from which it was derived.