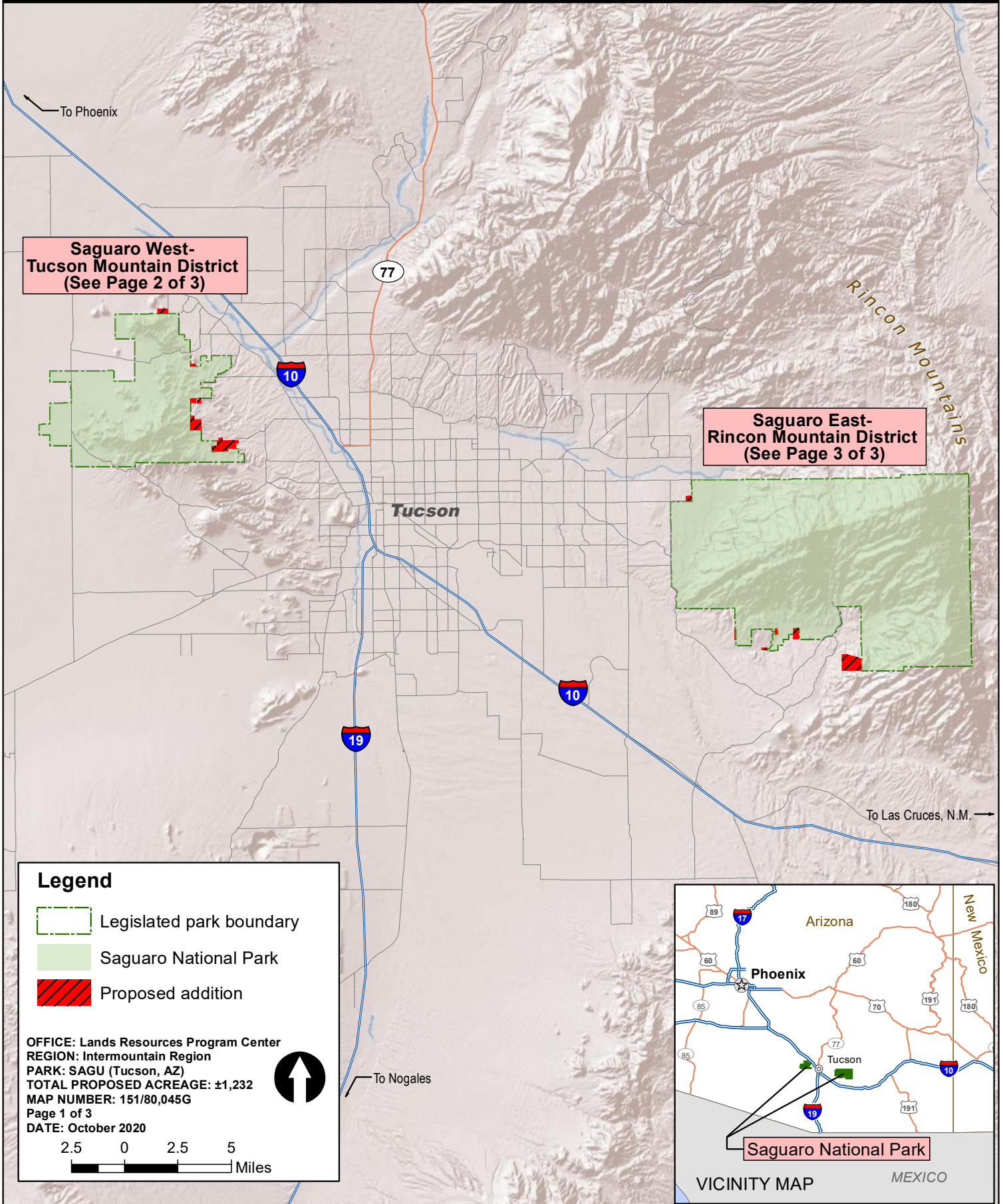


# SAGUARO NATIONAL PARK Proposed Boundary Adjustment

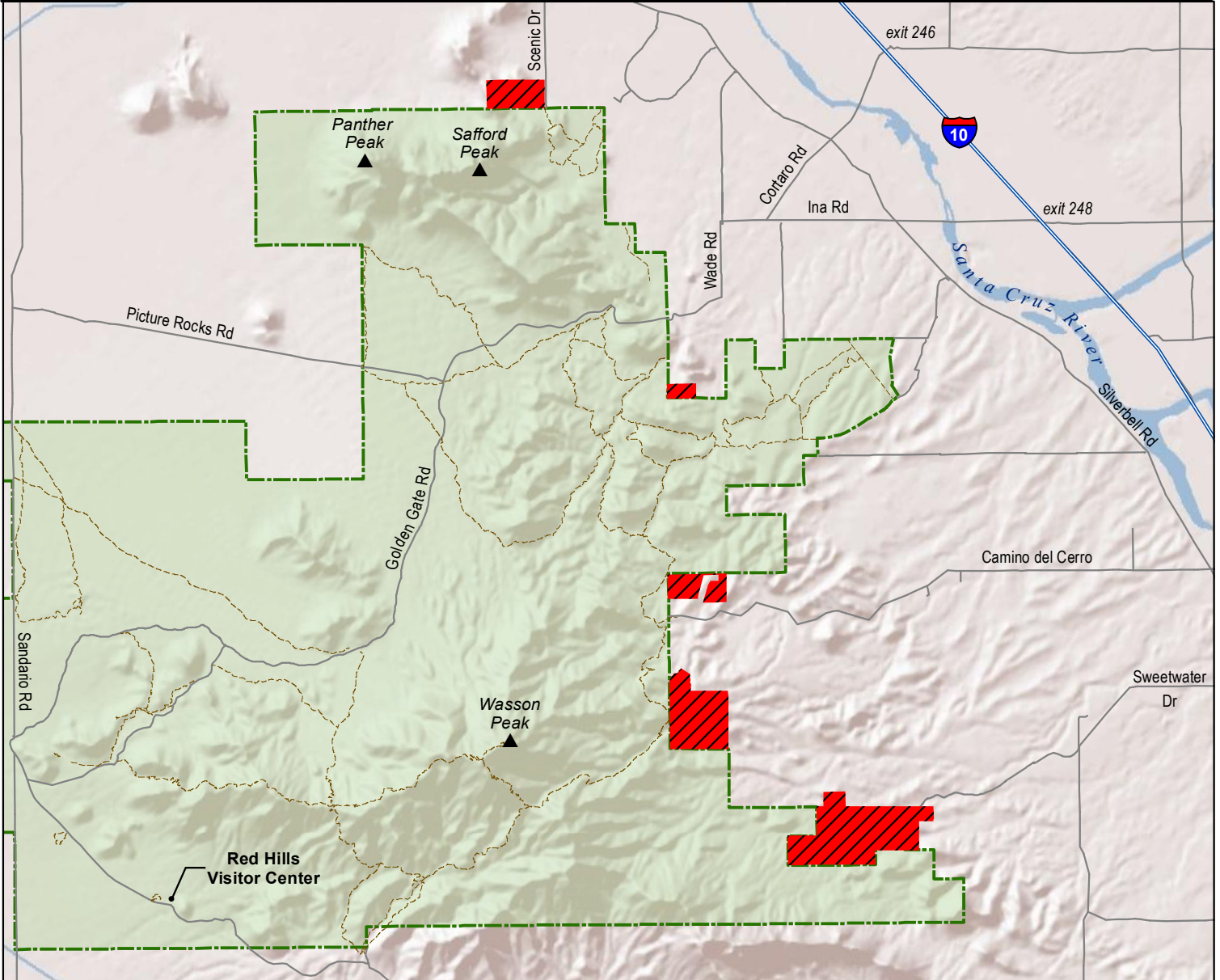
National Park Service  
U.S. Department of the Interior





# SAGUARO NATIONAL PARK Proposed Boundary Adjustment Saguaro West- Tucson Mountain District

National Park Service  
U.S. Department of the Interior

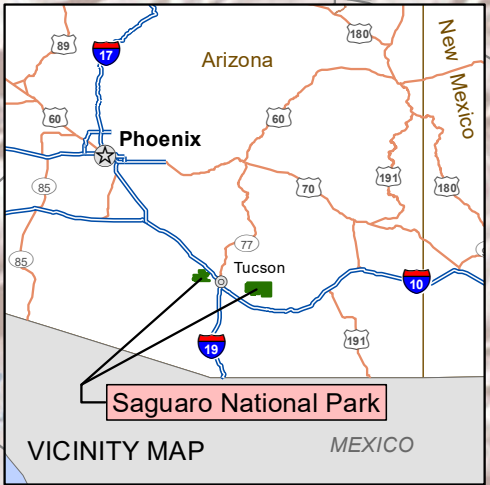


**Legend**

- Legislated park boundary
- Saguaro National Park
- Proposed addition
- Park trail

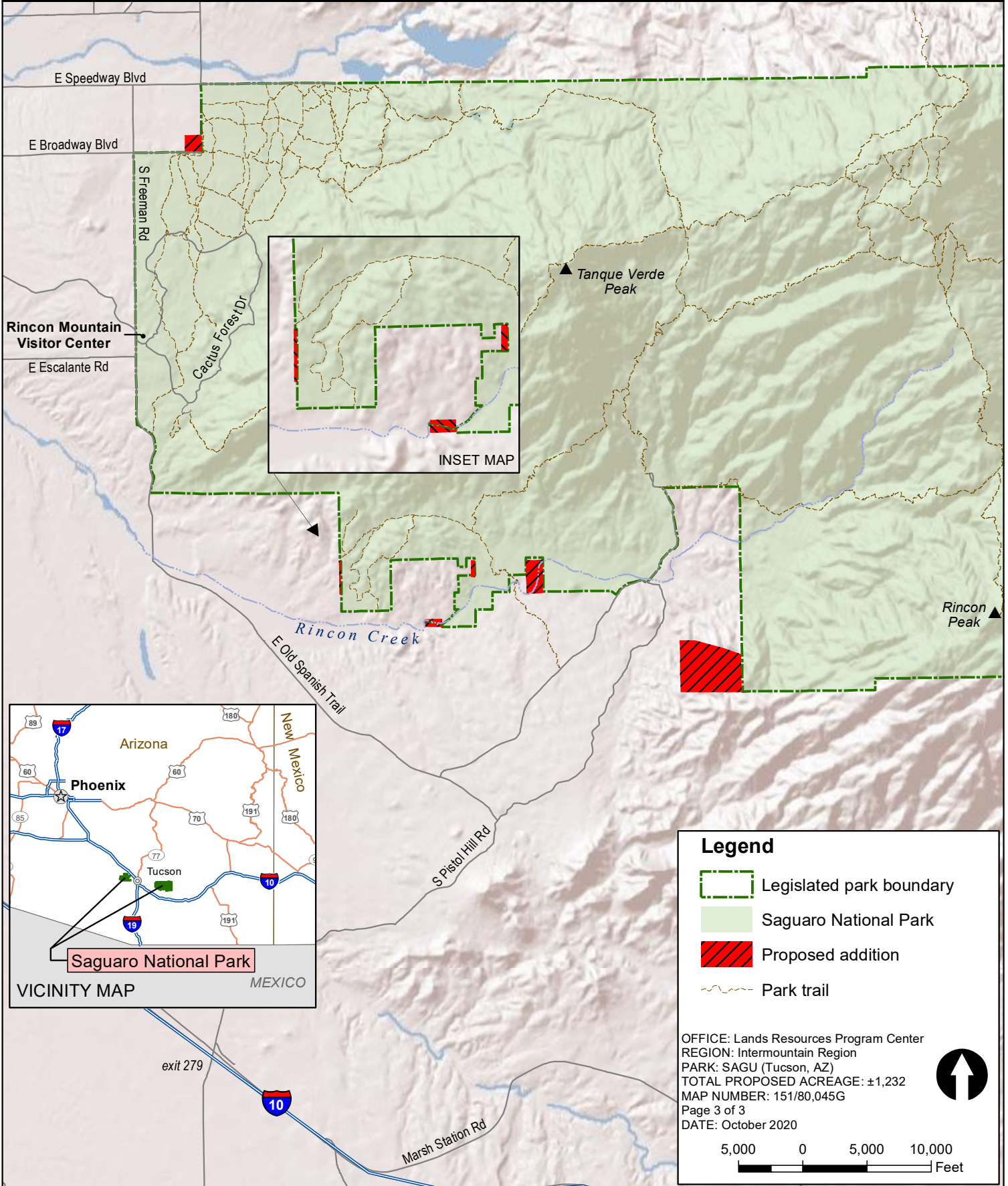
OFFICE: Lands Resources Program Center  
 REGION: Intermountain Region  
 PARK: SAGU (Tucson, AZ)  
 TOTAL PROPOSED ACREAGE: ±1,232  
 MAP NUMBER: 151/80,045G  
 Page 2 of 3  
 DATE: October 2020

3,500 0 3,500 7,000 Feet



# SAGUARO NATIONAL PARK Proposed Boundary Adjustment Saguaro East- Rincon Mountain District

National Park Service  
U.S. Department of the Interior



**Legend**

- Legislated park boundary
- Saguaro National Park
- Proposed addition
- Park trail

OFFICE: Lands Resources Program Center  
 REGION: Intermountain Region  
 PARK: SAGU (Tucson, AZ)  
 TOTAL PROPOSED ACREAGE: ±1,232  
 MAP NUMBER: 151/80,045G  
 Page 3 of 3  
 DATE: October 2020

5,000 0 5,000 10,000 Feet